



United States Department of Agriculture

A clear glass jar with a black wire lid is shown against a background of soft-focus green leaves. Inside the jar, a single Asian longhorned beetle is visible. The beetle has a dark, spotted body and very long, segmented antennae. The text "THE ASIAN LONGHORNED BEETLE: AN INVASIVE TREE PEST" is printed in the center of the jar's body.

**THE ASIAN  
LONGHORNED BEETLE:  
AN INVASIVE  
TREE PEST**



In accordance with Federal civil rights law and USDA civil rights regulations and policies, the USDA, its Agencies, offices, and employees, and institutions participating in or administering USDA programs are prohibited from discriminating based on race, color, national origin, religion, sex, gender identity (including gender expression), sexual orientation, disability, age, marital status, family/parental status, income derived from a public assistance program, political beliefs, or reprisal or retaliation for prior civil rights activity, in any program or activity conducted or funded by USDA (not all bases apply to all programs). Remedies and complaint filing deadlines vary by program or incident.

Persons with disabilities who require alternative means of communication for program information (e.g., Braille, large print, audiotape, American Sign Language, etc.) should contact the responsible Agency or USDA's TARGET Center at (202) 720-2600 (voice and TTY) or contact USDA through the Federal Relay Service at (800) 877-8339. Additionally, program information may be made available in languages other than English.

To file a program discrimination complaint, complete the USDA Program Discrimination Complaint Form, AD-3027, found online at [How to File a Program Discrimination Complaint \(www.ascr.usda.gov/filing-program-discrimination-complaint-usda-customer\)](http://www.ascr.usda.gov/filing-program-discrimination-complaint-usda-customer) and at any USDA office or write a letter addressed to USDA and provide in the letter all of the information requested in the form. To request a copy of the complaint form, call (866) 632-9992. Submit your completed form or letter to USDA by: (1) mail: U.S. Department of Agriculture, Office of the Assistant Secretary for Civil Rights, 1400 Independence Avenue, SW, Washington, D.C. 20250-9410; (2) fax: (202) 690-7442; or (3) email: [program.intake@usda.gov](mailto:program.intake@usda.gov).

USDA is an equal opportunity provider, employer, and lender.

This publication reports research involving pesticides. All uses of pesticides must be registered by appropriate State and/or Federal agencies before they can be recommended.

CAUTION: Pesticides can be injurious to humans, domestic animals, desirable plants, and fish or other wildlife if they are not handled or applied properly. Use all pesticides selectively and carefully. Follow recommended practices for the disposal of surplus pesticides and pesticide containers.

Issued February 2016

*Photo Credits:* APHIS photographer R. Anson Eaglin took the photos on page 3 of the exit hole, page 4 of the adult ALB, page 6 of the ground crew, and page 7 of the tree grinding and chipping work. The maple leaf photo on page 3 is from Getty Images. All other images in this brochure are USDA file photos.

## THE ASIAN LONGHORNED BEETLE

The Asian longhorned beetle (*Anoplophora glabripennis*), or ALB, is an invasive insect that feeds on a wide variety of trees in the United States, eventually killing them. If it were to become established here, the ALB could become one of the most destructive and costly species ever to enter the country. The beetle threatens urban and suburban shade trees, recreational resources such as parks, and forest resources and wildlife. It could also harm industries such as maple syrup production, hardwood lumber processing, nurseries, and tourism.

The ALB most likely came to the United States inside wood packaging material from Asia. Nobody is sure exactly when the first beetle arrived here. Since its first discovery in Brooklyn, NY, in 1996, the beetle has been found in five States: New York (1996), Illinois (1998), New Jersey (2002), Massachusetts (2008), and Ohio (2011). Alert workers have reported seeing it in ports and warehouses in other parts of the country, where the insects were destroyed before they could escape to start new infestations.



*Adult beetle tunneling in a tree*

The U.S. Department of Agriculture's (USDA) Animal and Plant Health Inspection Service (APHIS) partners with Federal and State agencies to find and destroy ALB infestations. APHIS and its cooperators have eradicated infestations in Illinois; New Jersey; Manhattan, Staten Island, and Islip, NY; and Boston, MA. Eradication efforts continue in Brooklyn and Queens, NY; on central Long Island, NY; in Worcester County, MA; and in Clermont County, OH. For eradication efforts to succeed, residents in infested and noninfested areas must remain on the lookout for this destructive pest.

## MEET THE BEETLE

Native to China and the Korean Peninsula, the ALB is in the wood-boring beetle family Cerambycidae. Adult beetles are large, distinctive-looking insects, measuring 1 to 1.5 inches in length with long antennae. Their bodies are black with small white spots, and their antennae are banded in black and white.

Adult females chew depressions into the bark of various hardwood tree species. They lay an egg—about the size of a rice grain—under the bark at each site. (Females can lay up to 90 eggs in their lifetime.) Within 2 weeks, the egg hatches, and the white larva bores into the tree, feeding on the living tissue that carries nutrients and the layer responsible for new growth under the bark. After several weeks, the larva tunnels into the woody tree tissue, where it continues to feed and develop over the winter. Larvae molt and can go through as many as 13 growth phases. As the larvae feed, they form tunnels or galleries in tree trunks and branches. Sawdust-like material, called frass, from the insect's burrowing can be found at the trunk and branch bases of infested trees.

Over the course of a year, beetle larvae develop into adults. The pupal stage lasts 13 to 24 days. After adult beetles emerge from the pupae, they chew their way out of the tree, leaving round exit holes approximately three-eighths of an inch in diameter. Once they have exited a tree, they feed on its leaves and bark for 10 to 14 days before mating and laying eggs.

Because the ALB can overwinter in multiple life stages, adults emerge at different times. This results in their feeding, mating, and laying eggs throughout the summer and fall. While adult beetle activity is most obvious during the summer and early fall, adults have been seen from April to December. Adult beetles can fly for 400 yards or more to search for a host tree or mate. However, they usually remain on the tree from which they emerged, resulting in infestation by future generations.

Signs of the ALB start to show about 3 to 4 years after infestation, with tree death occurring in 10 to 15 years depending on the tree's overall health and site conditions. Infested trees do not recover, nor do they regenerate. Foresters have observed ALB-related tree deaths in New York, Illinois, New Jersey, Massachusetts, and Ohio.



*Exit hole on a tree*



*Maple*

### **ALB HOST TREES**

Collectively, the tree species the insect favors are called ALB host trees. In the United States, known ALB host trees include all species of the following 12 genera:

- Ash (*Fraxinus*)
- Birch (*Betula*)
- Elm (*Ulmus*)
- Golden raintree (*Koelreuteria*)
- Horsechestnut/buckeye (*Aesculus*)
- Katsura (*Cercidiphyllum*)
- London planetree/sycamore (*Platanus*)
- Maple (*Acer*)
- Mimosa (*Albizia*)
- Mountain ash (*Sorbus*)
- Poplar (*Populus*)
- Willow (*Salix*)

In the United States, the most commonly infested tree species is maple, followed by elm and willow.

## BATTLING THE BEETLE

APHIS takes actions to exclude, eradicate, and/or control the ALB and other plant pests, as authorized by the Plant Protection Act of 2000. The agency's regulations for plant pests and ALB eradication programs can be found in title 7, sections 330 and 301.51 of the *Code of Federal Regulations* (CFR), respectively.

To stop new ALB infestations from entering the United States, APHIS regulates the import of wood packaging material, a known pathway for the insect's movement. Under Title 7, section 319.40 of the CFR, all wood packaging material must be heat treated or fumigated before being imported. Special stamps and paperwork must accompany shipments to verify which approved treatment took place. Items that do not meet these requirements are returned to their country of origin. To further exclude the ALB, all international passenger baggage, cargo, packages, mail, and conveyances are subject to inspection when entering the country.

If an ALB infestation is detected, APHIS works closely with Federal and State officials to eradicate it. Given the ALB's destructive

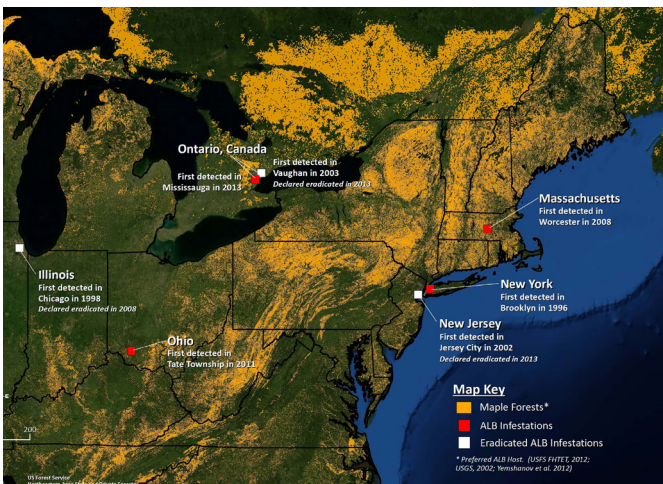


*Front view of an adult beetle*

potential, the agency's goal is to eliminate beetle populations in the United States. To achieve this goal, APHIS and its partners:

- establish quarantines (up to a 1.5-mile radius from infested trees) to restrict the movement of regulated materials,
- inspect ALB host trees from the ground or from the air for signs of infestation,
- remove infested and high-risk host trees within a quarantine area,
- apply a preventative systemic insecticide to noninfested host trees,
- research best practices and eradication methods, and
- involve and inform the public.

Before starting eradication activities, APHIS looks closely at potential environmental effects. This process allows for better-informed decisionmaking and public involvement. Over the years, extensive data on the beetle has been collected, enabling the agency and its cooperators to refine the eradication methods used. Through years of study and field examination of the ALB in all its life stages, APHIS knows that current methods represent the best science-based approach to eradication available to date.



*Infestations in North America*

## QUARANTINES

When ALB infestations are found, APHIS and State officials establish regulated areas (quarantines) around them. Quarantines help with beetle eradication by restricting the movement of ALB host materials (known as regulated articles). This keeps infestations from spreading to new locations.

APHIS and State personnel inspect, or survey, host trees located near infested trees to identify the extent of an infestation and set quarantine boundaries. In most cases, quarantine boundaries are 1.5 miles from trees with ALB exit holes and half a mile from trees with only egg sites. Under quarantine, regulated articles include the beetle and all its life stages; firewood of all hardwood species; green lumber; and other living, dead, cut, or fallen materials. Such materials include nursery stock, logs, stumps, roots, branches, and debris of one-half inch or more in diameter of all ALB host trees.

Cutting a tree into firewood does not kill any of the ALB life stages within it. Residents should never move firewood out of an ALB quarantine area. Instead, they should always buy firewood where it will be burned.



*Section of a pallet showing tunneling and frass*



*Regulated area sign in Massachusetts*

## COMPLIANCE AGREEMENTS

Under Federal and State laws, people and businesses may not move regulated items out of an ALB quarantine area without a compliance agreement, permit, or certificate. If people or companies do commercial work involving regulated materials within a quarantine area, they must enter into a compliance agreement with the ALB eradication program in their State. A compliance agreement allows the holder to access approved sites to dispose of woody debris. Nonetheless, even those with a compliance agreement should not move material if they believe it may be ALB-infested. Instead, they should notify the eradication program right away.

## TREE SURVEYS

APHIS and State inspectors are always on the lookout for the ALB. They conduct year-round surveys to:

- find infested trees and determine the scope of an infestation;
- establish quarantine areas;
- determine whether the beetle has spread outside an established quarantine area and, if it has, expand the regulated area; and
- decide when to release an area from quarantine.

Inspectors search for signs of ALB infestation on host trees by using binoculars from the ground, conducting aerial inspections using bucket trucks, and climbing within tree canopies. Signs of infestation include egg sites, exit holes, frass, tunneling, and sap flow from damaged sites.

If inspectors find an infestation, they conduct a Level 1 survey, also known as a core survey, to determine its scope. During Level 1 surveys, they look for signs of infestation on every host tree around the infestation until they fail to find ALBs within approximately a half-mile radius. If they discover additional infestations, the half-mile radius is extended from the farthest find. The half-mile radius is based on the ALB's natural spread potential.

To make sure an infestation is not spreading beyond the half-mile radius established during the Level 1 survey, inspectors conduct a Level 2 survey, or buffer survey. During a Level 2 survey, they inspect host trees at least 1 mile beyond the radius set during the Level 1 survey. Inspectors often focus on maple trees when they are present. The eradication program may adjust the survey radius



*Ground crew inspecting a tree*



*Tree climbers surveying the top of a tree*

if more infested trees are found. Level 2 surveys continue until no infested trees are found.

Federal and State personnel may also conduct a Level 3 survey, or high-risk site survey, to identify and inspect locations where potentially infested host material may have been transported, stored, processed, or sold. High-risk sites include, but are not limited to: landscape, nursery, tree, and lawn care company locations; parks and campsites; landfills and disposal sites; and import facilities. Level 3 surveys mainly focus on maple trees when they are present.

Inspectors typically survey a property or an area more than once. Negative survey results are required to declare an area free of ALB infestation.

## TREE REMOVALS

Controlling the spread of the ALB is vital to eradicating the beetle. All infested trees are removed, even if they have been treated with insecticide (see “Insecticide Treatments” section on next page for more detail). A tree is considered infested if inspectors find at least one egg site, an exit hole, or a gallery characteristic of those formed by the ALB. Landowners are notified by mail or in person before trees are removed from their property.

If host trees are near infested trees, they could harbor undetected infestations or be at a high risk of infestation. Due to the risk they pose, high-risk host trees within one-half mile of infested trees can be removed with the landowner’s permission. If the landowner does not allow removal, the eradication program continues surveying. If trees become infested, they are removed after the landowner is notified.

After trees are removed, they are either incinerated or chipped to destroy all ALB life stages within them. Trees are chipped to less than 1 inch in two dimensions to remove the risk of ALB. Wood chips of this size are no longer a regulated article.



*Material being ground into chips at a disposal yard*



*A tree entering the grinding machine at a residence*

Because the beetle can reinfest the stumps of removed trees, it is good to remove and grind them. In some locations, stumps are left to allow for regrowth, particularly in areas prone to soil erosion or in sensitive wildlife habitats. The eradication program may also use herbicides to prevent shoots from growing out of stumps.

When trees are removed from yards and landscaped settings, the eradication program may restore the area by grading and planting groundcover. This reduces the likelihood that invasive weeds will become established and helps hold the soil in place.

## TREE REPLANTING

Federal and State personnel work with various organizations to replant nonhost trees in areas where trees are removed as part of the ALB eradication efforts. The goal is to help preserve the tree canopy lost, ensure diversity of tree species, and reinvigorate neighborhoods and streetscapes. Replanting programs vary by State, but affected residents may be eligible for tree replanting at no cost to them.



## INSECTICIDE TREATMENTS

Control efforts can include treating noninfested host trees in quarantine areas with the insecticide Imidacloprid. This treatment reduces beetle populations and can prevent trees from becoming infested.

When determining whether to treat trees with Imidacloprid, APHIS and State officials consider several important factors, such as efficacy, environmental and biological issues, the scale of an infestation, and cost. They must ensure that specific criteria are met before applying the insecticide. High-risk host trees within one-half mile of an infested tree can be treated with the landowner's permission. If the landowner does not allow the treatment, survey efforts continue. If trees later become infested with ALBs, they are removed after the landowner is notified.

Imidacloprid treatments can be effective against ALBs when applied in the spring, early summer, or fall—prior to or when adults emerge. Imidacloprid is injected directly into the tree's trunk or into soil at the tree's base. It takes 1 to 3 weeks by trunk injection and up to 3 months by soil injection for Imidacloprid to distribute throughout



*Direct soil injection*

the tree, depending on the tree's size and condition and weather circumstances. For maximum effectiveness, trees should be treated annually for 3 consecutive years.

While Imidacloprid treatments can decrease beetle populations and help protect against future tree loss, they do not completely control ALB spread.

## RESEARCH

Research is conducted in laboratories across USDA to learn more about the ALB. This information, in turn, guides the eradication methods that APHIS and State cooperators develop and carry out. U.S. scientists have traveled to China to learn more about the insect. But, even in Asia, little scientific information was available in 1996, when the beetle was first detected in the United States. Field studies and trials and laboratory research over the years have been vital in developing the protocols used today to fight the beetle.

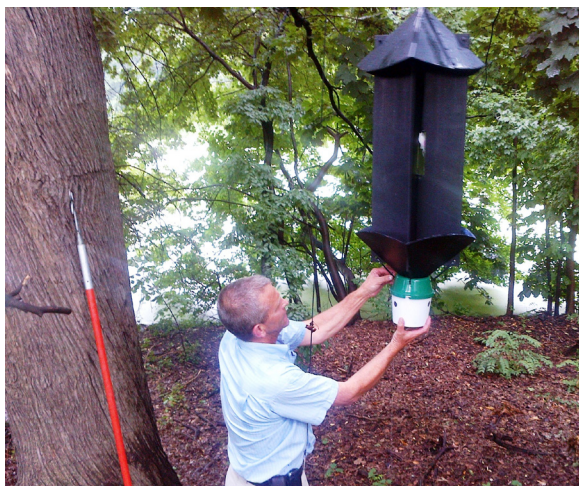


*Direct trunk injection*

USDA is now researching regulatory treatments for wood and nursery stock, chip size and grinding techniques to deregulate ALB host materials, traps to lure adult beetles, and the use of dogs to detect the insect's presence. USDA is also studying how quickly the insect spreads on its own and its host tree preference and range. In addition, USDA is conducting DNA analysis and various behavioral experiments.

## OUTREACH AND EDUCATION

APHIS and its partners recognize the importance of public involvement and outreach. They strive to share as much information as possible with people who live and work in ALB-affected areas. An alert Brooklyn homeowner was the first to notice beetle damage on his trees and report it to authorities, leading to the discovery of this invasive pest in the United States. Since then, residents have helped uncover infestations in other areas of New York and in Illinois, New Jersey, Massachusetts, and Ohio. In addition to detection, informed residents understand the importance of giving program officials access to their property so that they can search for signs of the pest, apply treatments, and remove infested trees, if needed, before an infestation spreads to other areas.



*Checking a tree trap*



*Table at an outreach event*

## ERADICATION

To declare eradication in an area, APHIS and State officials require a final round of negative survey results. A final survey cycle is completed at least 4 years after an initial ALB detection. The exact timing depends on several factors, including the size and scope of the original infestation and other programmatic and logistical aspects.

## AFFECTED STATES

APHIS and State personnel are now fighting ALB infestations in three States: New York, Massachusetts, and Ohio. Information about the eradication program operating in each State is below.

If you perform work on regulated articles in any quarantine area, you must enter into a compliance agreement with the ALB eradication program in your State to move items to approved sites for disposal. Before entering into an agreement, you need to attend free compliance training. To register for this training, please call:

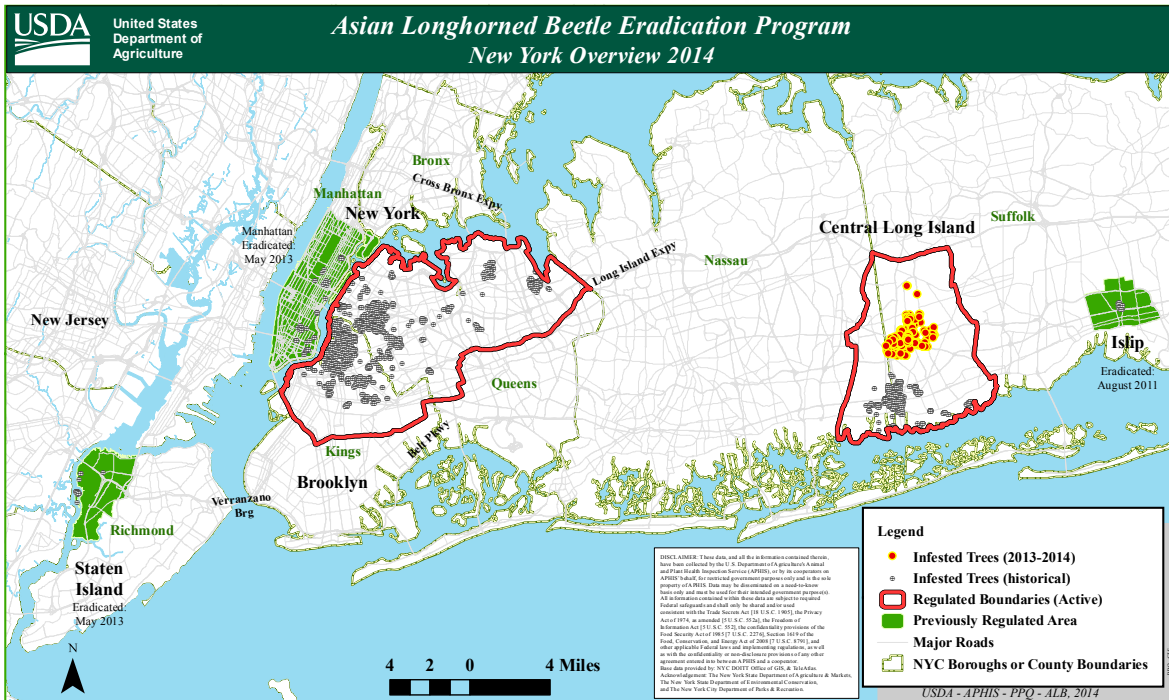
- **631-288-1751** if you work in New York.
- **508-852-8110** if you work in Massachusetts.
- **513-381-7180** if you work in Ohio.

## NEW YORK PROGRAM

The ALB was discovered infesting trees in Brooklyn, NY, in August 1996. Since then, it has been detected in other areas of the State. To achieve ALB eradication in New York, APHIS partners with the New York State Department of Agriculture and Markets (NYSDAM).

Currently, 137 square miles are regulated for ALB in the State, including the New York City boroughs of Brooklyn and Queens and part of central Long Island. APHIS and NYSDAM have eradicated infestations in Manhattan, Staten Island, and Islip.

For questions about the New York ALB Eradication Program, call 1-866-265-0301.



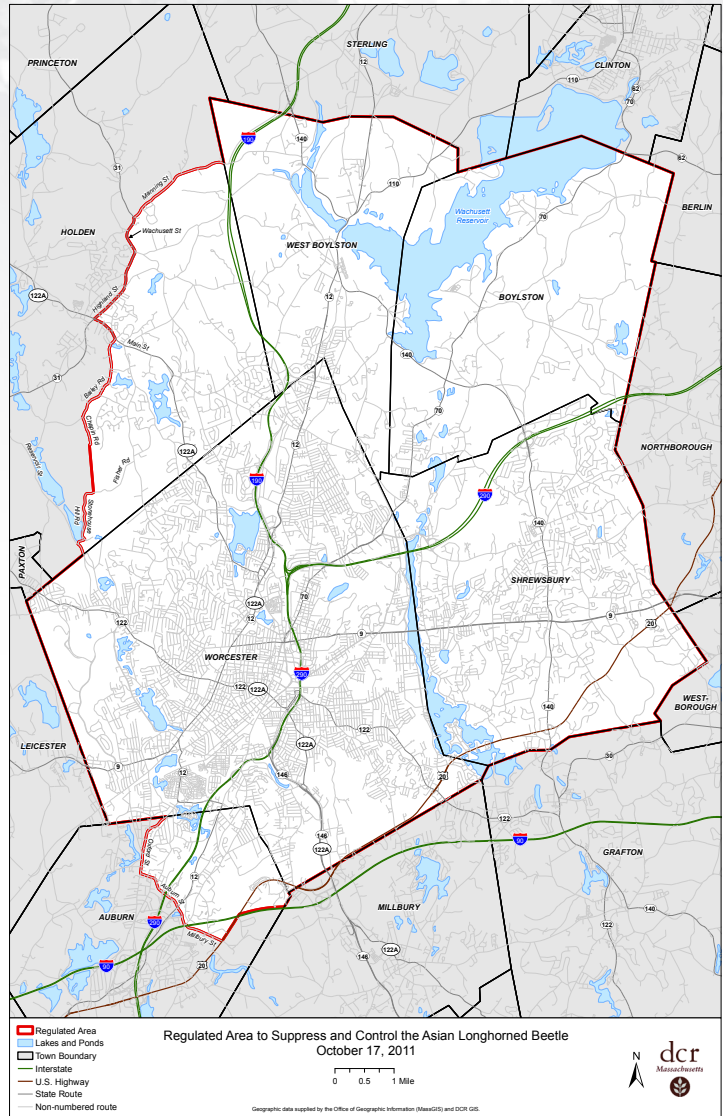
Map of regulated areas in New York

## MASSACHUSETTS PROGRAM

The beetle was first found in Worcester, MA, in August 2008. Since that time, the regulated area has expanded within Worcester County due to additional detections. APHIS and the Massachusetts Department of Conservation and Recreation (DCR) work together on ALB eradication efforts in the State.

At present, 110 square miles are regulated for the ALB in Worcester County. Regulated areas include all of Worcester, West Boylston, Boylston, and Shrewsbury, as well as part of Holden and Auburn. APHIS and DCR have eradicated the beetle in Boston.

For more information about the Massachusetts ALB Eradication Program, call 508-852-8090.

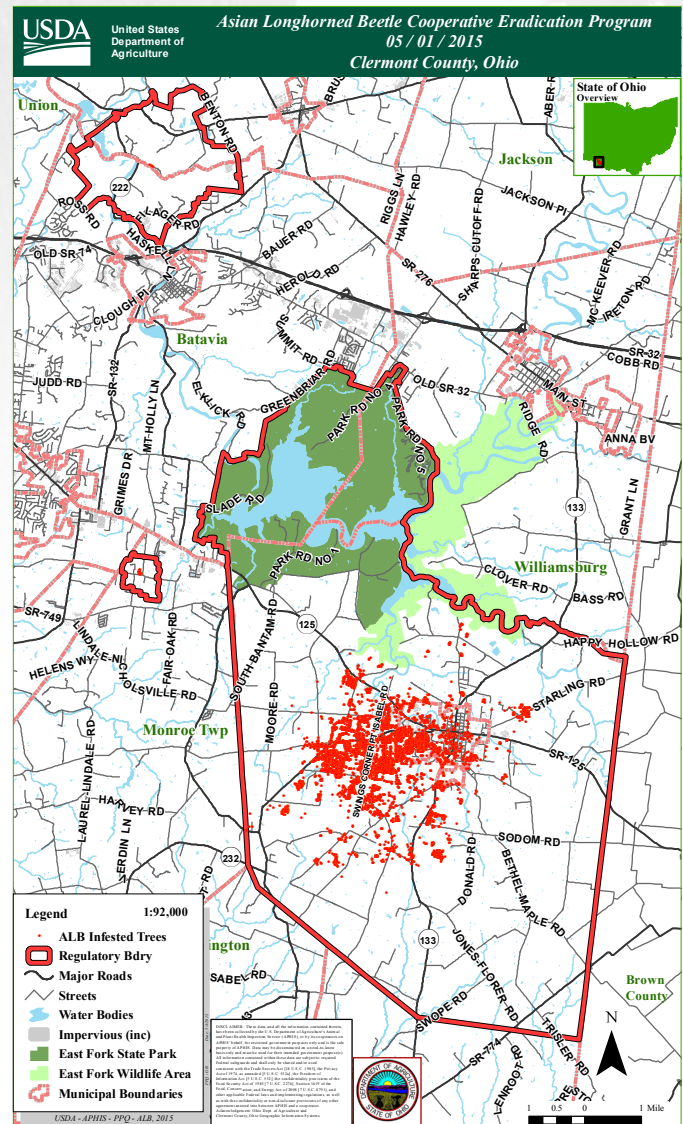


Map of the Worcester County, MA, regulated area

## OHIO PROGRAM

APHIS first confirmed the ALB in Tate Township, OH, in June 2011. Due to additional detections of ALB-infested trees, the regulated area has expanded within Clermont County since then. APHIS partners with the Ohio Department of Agriculture to eradicate beetle infestations in the State. Currently, 61 square miles are regulated for ALB in Clermont County, including Tate, Monroe, Stonelick, and Batavia Townships.

For questions about the Ohio ALB Eradication Program, call 513-381-7180.



Map of the Clermont County, OH, regulated area

## HOW YOU CAN HELP

One of the most important ways you can help stop the ALB is to look for it and report it. During the summer and early fall, check your trees once a month. A quick tree check in your yard or neighborhood could help you spot the signs of the beetle early enough to prevent it from spreading further. If you see a beetle or suspect that tree damage is caused by the ALB, please report it by calling **1-866-702-9938** or filling out the online form at <https://www.aphis.usda.gov/pests-diseases/alb/report>.

Before reporting it, please record the area where you found the insect or damage. If possible, capture the insect you think is an ALB, place it in a jar, and freeze it. This will preserve the insect for easy identification. It is also a good idea to take digital pictures of the insect and/or tree damage in case officials request them.

## RESIDENTS IN QUARANTINE AREAS

If you live in an ALB quarantine area, you can help by allowing program officials access to your property to perform tree surveys and remove infested and, in some cases, high-risk host trees. Also, be sure to hire companies that have compliance agreements with the eradication program for working on host trees.

If you need to move woody materials such as stumps, logs, brush, and twigs, please contact your local eradication program office or municipality for information on proper yard waste disposal. You should not move any infested tree materials, live trees, or nursery stock of host trees. Instead, contact your local eradication program office.

Finally, never move wood out of ALB-regulated areas. It can spread the beetle and other tree pests and diseases.

To report a sighting of the beetle or signs of damage, call **1-866-702-9938** or contact the ALB eradication program operating in your State:

- New York: **1-866-265-0301** or **1-877-STOPALB**
- Massachusetts: **508-852-8090**
- Ohio: **513-381-7180**

## **MORE INFORMATION**

For more information about the ALB—including maps, videos, photographs, publications, and other useful resources—visit [www.aphis.usda.gov/plant-health/alb](http://www.aphis.usda.gov/plant-health/alb) or [www.AsianLonghornedBeetle.com](http://www.AsianLonghornedBeetle.com).

Information is also available through Facebook ([www.facebook.com/asianlonghornbeetle](http://www.facebook.com/asianlonghornbeetle)) and Twitter (@StopALB).

